

Contributing to Local Communities

Contributing to society is one of the Corporate Values espoused by the Shinko Way, and the Shinko Group strives to promote the creation of a prosperous society through its corporate activities.

We have developed deep roots in communities and engage in social activities in harmony with these local communities.

About Kurita Sogo Center

The Kurita Plant, the former head office plant, had been the main plant for about half a century, since being established in 1957, and it supplied a range of products to the market. When the plant opened, the surrounding area was a tranquil environment with rice paddies spreading out in every direction. However, with the rapid development of the area and its transformation into a residential neighborhood, the entire plant was demolished and rebuilt. Today, the Kurita Sogo Center, the replacement, is surrounded by lush greenery to harmonize with the local community.

The Kurita Sogo Center is a place of recreation and relaxation where people passing by can experience a breath of nature in each of the four seasons, including cherry blossoms in the spring and autumn leaves in the fall.



Kurita Sogo Center

Coexistence and Dialogue with Local Communities

Social Contributions Deeply Rooted in Local Communities

The Shinko Group aims to coexist harmoniously with local communities through its business operations, in addition to which it has, since its founding, worked to create and maintain stable employment.

Through these activities, the Shinko Group seeks to remain a widely trusted company that is needed by society and that contributes to the local activities of communities.

Awareness Campaigns on Traffic Safety

In conjunction with the National Traffic Safety Campaign, we conduct awareness campaigns on traffic safety. Especially, we are working to prevent traffic accidents involving children by calling out to local elementary school students and watching over them so that they can safely go to school. To help realize a society with zero traffic accidents, we will work together with local residents to encourage people to observe all traffic rules and to practice traffic safety.



Awareness Campaigns on Traffic Safety

Initiatives to Protect the Local Environment

Adopt-a-forest Program

We participate in the adopt-a-forest program promoted by Nagano Prefecture and are working with Iizuna Town on forest maintenance in forests owned by the town around Lake Reisenji. In 2014, we concluded an adopt-a-forest agreement with Iizuna Town, and in October 2019 renewed the agreement.

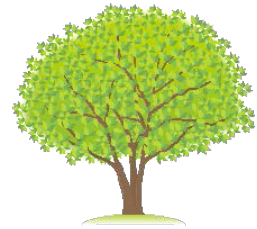
In FY2022, in collaboration with the labor union, we carried out various forms of forest maintenance in May and November, including planting of saplings, cutting of undergrowth, and maintenance of walking trails by scattering wood chips. We will continue forest development activities in collaboration with local communities.



Tree planting in May, 2022

Collecting and Donating Stamps

Shinko collects used stamps, which we donate to funds for tree planting. From July 2005, when we started this campaign, until the end of FY2022, we collected and donated enough stamps to purchase about 1,010 saplings.



Beautification around Our Plants

Shinko carries out beautification activities, such as picking up garbage, around its plants, mainly during Environment Month, which is held every June. We will continue to work steadily to ensure that the beautiful environment around the plant is passed on to future generations.



Cleanup activities around the plant being conducted (Takaoka Plant)

Supporting Youth Development

Plant Tours and Internships

Shinko provides opportunities to nearby schools for learning through plant tours. In FY2022, we invited high school students to tour the Kohoku Plant to see and experience actual manufacturing.

The Shinko Group also provides internships in the hope that these internships will provide an effective foothold for students who will lead the next generation to establish their outlook on work and discover their abilities.

Classroom Support for Educational Institutions

Our employees give lectures at high schools and universities for the purpose of fostering human resources who can play an active role in industry and for career education.

Employees visit their alma maters and explain the nature of work in the manufacturing industry and Shinko's profile, as well as introduce their own experiences. This is an opportunity to help students choose their future career paths.



Career support education activities for high school students

Supporting the Hokushin Scholarship Foundation

Shinko's co-founder and former president, Takekio Mitsunobu, donated the retirement money he received when he stepped down as a director, as well as company stock that he held, to establish the Hokushin Scholarship Foundation, a public interest incorporated foundation.

Based on former president Mitsunobu's belief that the establishment of a high-tech prefecture starts with human resources development, the foundation has thus far granted scholarships to a total of 582 engineering and medical students who are either from Nagano Prefecture or studying at universities in Nagano Prefecture (including exchange students).

Shinko helps run the foundation by serving as its secretariat.



Topic

Contributed to and Collaborated in "Donated Course in Engineering Education" in Faculty of Engineering, Shinshu University

Shinko approved of the aims of the "Donated Course in Engineering Education" that was established by the Faculty of Engineering of Shinshu University to "develop human resources capable of utilizing data science," and we not only made a donation but also collaborated in the assessment of the teaching materials used in the course and the analysis of educational needs.

In addition to enhancing the education of students in the field of data science, which is the basis for the development of digital human resources, this donated course also plans to provide recurrent education and reskilling education for working adults and is expected to develop human resources who can play an active role in the community.

The working population is expected to decrease in the future, and improving work efficiency and productivity through the use of digital technology is one of the important initiatives for eliminating the impact of the decline in the labor force. Our company will work together with the university to ensure that this industry-academia collaboration not only solves problems in the industrial world but also leads to the realization of a vibrant local community.



July 20, 2023 Press Conference at Shinshu University
(conference participants from Shinshu University and donor corporations)

Initiatives at Overseas Plants

● KOREA SHINKO MICROELECTRONICS CO., LTD. (KSM)

KSM (Korea) conducts annual clean-up activities on roads surrounding industrial parks where its plant is located. In FY2022, KSM reduced the scope of its activities to prevent the spread of COVID-19.



Cleaning activities around the plant

● SHINKO ELECTRONICS (MALAYSIA) SDN. BHD. (SEM)

SEM (Malaysia) accepts internships and factory tours from local universities in order to promote understanding of the industry and support employment.

It is also promoting community-based activities, such as participation in a monitoring program by neighboring companies to maintain and improve safety in the industrial area surrounding SEM.



Orientation for students