

Motor Core

Introduction

SHINKO provides high-precision, high-quality motor cores by applying precision stamping die tool technology cultivated by semiconductor package manufacturing technology.

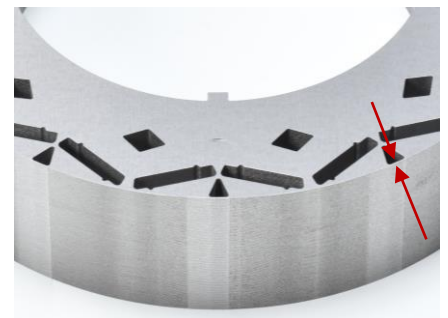
Feature

- Available electrical steel sheet thickness: 0.15 mm to 0.5 mm
- Precision stamping and laminating for fine and complicated shapes
- Consistent in-house process from stamping die tool design, tool manufacturing and stamping



Example

- Sheet core thickness : 0.25 mm
- Sheet core flatness : <0.35 mm
- Laminated core diameter : $\Phi 170$ mm
- Laminated core height : 39 mm
- Laminate position accuracy : <0.02 mm
- Dimensional tolerance : <0.02 mm



Outer-Wall Width : 0.25 mm

Application

- Motors for industrial equipment
- Motors for electric vehicles and hybrid vehicles

