

# Our History

## 1946-1965

### A New Light for People and for Society

Our manufacturing started with the recycling business of household lightbulbs in post-war Japan. In anticipation of a new era, we focused all of our efforts on developing new products. This effort is the source of our current technological innovation.

#### 1946

- Established Nagano Katei Denki Saisei-jo as a limited partnership
- Reorganized and renamed Nagano Katei Denki Saisei-jo, creating SHINKO ELECTRIC INDUSTRIES CO., LTD.

#### 1949

- Began supplying No.2 lamps to the Japan Ministry of Telecommunications (now NTT, Inc.)



#### 1953

- Began manufacturing glass-to-metal seals for diodes

#### 1957

- Obtained equity participation from Fujitsu Ltd., to expand into the field of semiconductors
- Opened the Kurita Plant in Nagano City, Nagano Prefecture



#### 1959

- Began manufacturing glass-to-metal seals for transistors



#### 1960

- Formed the SHINKO WORKERS UNION

#### 1963

- Opened the Kohoku Plant in Kohoku Village, Sarashina-gun(now Oshimada-machi, Nagano City), Nagano Prefecture



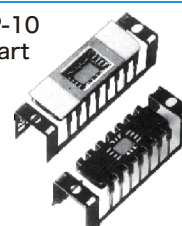
## 1966-1985

### Supporting the Development of Semiconductor Industry, and Expanding Business Globally

We made full use of semiconductor packaging technologies to steadily expand the business fields. It was in this era that our business expanded overseas rapidly.

#### 1966

- Began manufacturing DIP-10 packages, marking the start of IC package production by the Company



#### 1968

- Began manufacturing leadframes

#### 1977

- Established SHINKO ELECTRIC AMERICA, INC. in the US state of California

#### 1978

- Opened the Arai Plant in Arai City (now Myoko City), Niigata Prefecture

#### 1979

- Began IC assembly

#### 1980

- Opened the Takaoka Plant in Nakano City, Nagano Prefecture



#### 1982

- Began manufacturing glass-to-metal seals for laser diodes

#### 1984

- Listed shares on the Second Section of the Tokyo Stock Exchange

# 1986-2005

## Keeping Up with the Challenges of Accelerating Digital Technology

It is in our DNA to make the dreams of our customers a reality in the drive to satisfy market needs, under the environment where semiconductors continue to evolve smaller, thinner, and lighter.

### 1987

- Established KOREA SHINKO MICROELECTRONICS Co., Ltd.

### 1990

- Established SHINKO ELECTRONICS (MALAYSIA) SDN.BHD.

### 1991

- Opened the Wakaho R&D Center (now the Wakaho Plant) in Nagano City, Nagano Prefecture

### 1993

- Opened the Kyogase Plant in Kyogase Village (now Agano City), Niigata Prefecture



### 1994

- Established the Environmental Charter (later renamed the "Environmental Policy")

### 1995

- Began manufacturing PLP (Plastic Laminated Package)

### 1996

- Listed shares on the First Section of the Tokyo Stock Exchange



### 1998

- Takaoka Plant gains the ISO 14001 international environmental management certification. Other plants later gained the same certification as well.

### 2002

- Opened the SHINKO R&D Center in Kitaowaribe, Nagano City (within the former Nagano Plant of Fujitsu Ltd.)

### 2004

- Announced the opening of the Kurita Sogo Center. (formerly the Kurita Plant)



# 2006-2025

## Supporting the Innovation of Semiconductors Towards the Next Generation

Semiconductor technology that brings innovation in society. We pursue the highest level of manufacturing and technology and continuously strive to develop the latest innovations.

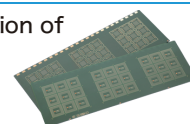
### 2010

- Established the Shinko Way
- Began large-scale production of DLL3® Coreless Substrates (an industry-first)



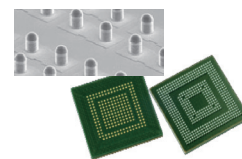
### 2013

- Began large-scale production of PBGA Thin Substrates (Coreless)



### 2014

- Began large-scale production of Cu pillars
- Began large-scale production of MCePs



### 2017

- Announced a Joint Labor Management Declaration on Transforming Work Styles

### 2021

- Opened the SHINKO Techno Academy

### 2022

- Established the Environmental Vision 2050
- Moved to the Prime Market due to the restructuring of the Tokyo Stock Exchange market



### 2023

- Opened the Chikuma Plant in Chikuma City, Nagano Prefecture



### 2025

- Delisted the shares with JICC Consortium as a new partner

Advancing to a new stage of further growth