

## Contributing to Local Communities

The Shinko Group upholds "Responsibility to Individual" in its Corporate Vision of the Shinko Way, making it its Corporate Values to contribute to society and protect the environment.

In addition, we will always keep an eye on society and the environment, and each and every one of us will act accordingly, bearing in mind that we are conducting business activities in various countries and regions around the world while maintaining close ties with society.

### Contributions Deeply Rooted in Local Communities

#### Coexistence with Local Communities

The Shinko Group aims to coexist harmoniously with local communities through its business operations, in addition to which it has, since its founding, worked to create and maintain stable employment.

Through these activities, the Shinko Group seeks to remain a widely trusted company that is needed by society and that contributes to the local activities of communities.

#### About Kurita Sogo Center

The Kurita Plant, the former head office plant, had been the main plant for about half a century, since being established in 1957, and it supplied a range of products to the market. When the plant opened, the surrounding area was a tranquil environment with rice paddies spreading out in every direction. However, with the rapid development of the area and its transformation into a residential neighborhood, the entire plant was demolished and rebuilt. Today, the Kurita Sogo Center, the replacement, is surrounded by lush greenery to harmonize with the local community.

The Kurita Sogo Center is a place of recreation and relaxation where people passing by can experience a breath of nature in each of the four seasons, including cherry blossoms in the spring and autumn leaves in the fall.



(Kurita Sogo Center)

#### Awareness Campaigns on Traffic Safety

In conjunction with the National Traffic Safety Campaign, we conduct awareness campaigns on traffic safety.

Especially, we are working to prevent traffic accidents involving children by calling out to local elementary school students and watching over them so that they can safely go to school. To help realize a society with zero traffic accidents, we will work together with local residents to encourage people to observe all traffic rules and to practice traffic safety.



(Awareness Campaigns on Traffic Safety)

## Beautification around Our Plants

Shinko carries out beautification activities, such as picking up garbage, around its plants, mainly during Environment Month, which is held every June. We will continue to work steadily to ensure that the beautiful environment around the plant is passed on to future generations.



(Cleanup activities around the plant being conducted (Kohoku Plant))

## Initiatives to Protect the Local Environment

### Adopt-a-forest Program

We participate in the adopt-a-forest program promoted by Nagano Prefecture and are working with Iizuna Town on forest maintenance in forests owned by the town around Lake Reisenji. Since the signing of the "adopt-a-forest program" in October 2014, we have conducted various forms of forest maintenance every year jointly with the labor union, and in FY2023, we planted saplings and cleared underbrush in June and October. We will continue to work with the local community to protect rich natural resources through sustainable forestation activities.



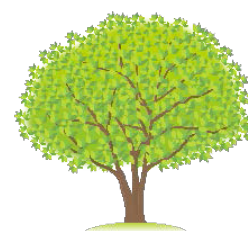
(Tree planting (June))



(Cutting of undergrowth (October))

### Collecting and Donating Stamps

Shinko collects used stamps, which we donate to funds for tree planting. In the past, we have also donated prepaid cards and unfinished postcards, etc. Through our donation activities that began in July 2005, we have collected and donated the equivalent of 1,039 saplings by the end of FY2023.



## Supporting Youth Development

### Plant Tours and Internships

Shinko provides opportunities to nearby schools for learning through plant tours. In FY2023, we invited local students to tour our Kohoku Plant (Nagano City), Takaoka Plant (Nakano City, Nagano Prefecture), and Arai Plant (Myoko City, Niigata Prefecture) so that they could see and experience the actual "The Art of Manufacturing" firsthand.

Shinko also provides internships in the hope that these internships will provide an effective foothold for students who will lead the next generation to establish their outlook on work and discover their abilities.

### Classroom Support for Educational Institutions

Our employees give lectures at high schools and universities for the purpose of fostering human resources who can play an active role in industry and for career education.

Employees visit their alma maters and explain the nature of work in the manufacturing industry and Shinko's profile, as well as introduce their own experiences. This is an opportunity to help students choose their future career paths.



(Career support education activities for high school students)

### Supporting the Hokushin Scholarship Foundation

Shinko's co-founder and former president, Takekio Mitsunobu, donated the retirement money he received when he stepped down as a director, as well as company stock that he held, to establish the Hokushin Scholarship Foundation, a public interest incorporated foundation.

Based on former president Mitsunobu's belief that the establishment of a high-tech prefecture starts with human resources development, the foundation has thus far granted scholarships to a total of 602 engineering and medical students who are either from Nagano Prefecture or studying at universities in Nagano Prefecture (including exchange students).

Shinko helps run the foundation by serving as its secretariat.



### Topic

#### Support for areas affected by the 2024 Noto Peninsula Earthquake

In order to fulfill our responsibility as a member of society, we have long provided donations and other assistance in the event of a major disaster.

In January 2024, we made a donation to the Japanese Red Cross Society to aid in the recovery of the victims of the Noto Peninsula Earthquake that occurred in January 2024.



## Initiatives at Overseas Plants

### ■ KOREA SHINKO MICROELECTRONICS CO., LTD. (KSM)

KSM (Korea) conducts annual clean-up activities on roads surrounding industrial parks where its plant is located. Along with clean-up activities, we also conduct educational activities to prevent unauthorized dumping of garbage.



(Cleaning activities around the plant)

### ■ SHINKO ELECTRONICS (MALAYSIA) SDN. BHD. (SEM)

SEM (Malaysia) has been making donations to orphanages, and in FY2023, employees from SEM visited orphanages to deepen exchanges with the children.



(Visit an orphanage)