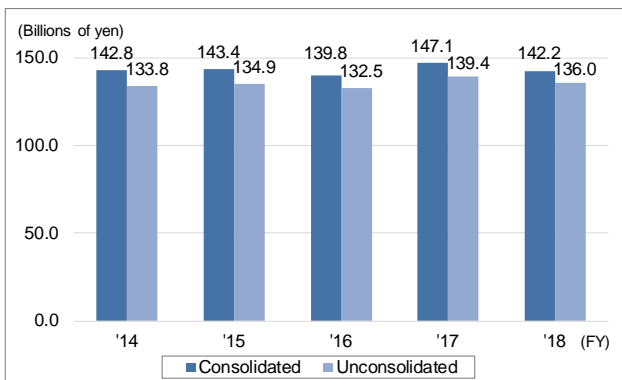


# Shinko Group Outline

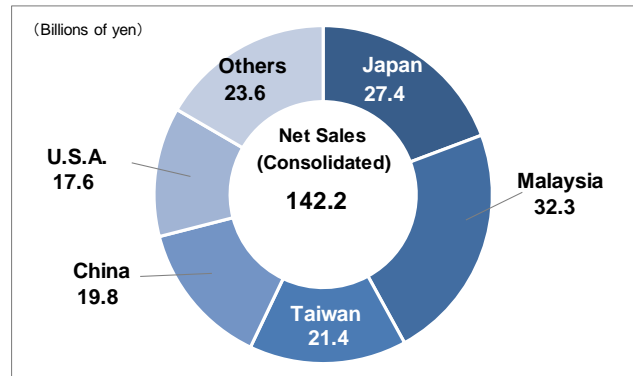
Corporate Name	SHINKO ELECTRIC INDUSTRIES CO., LTD.
Head Office	80, Oshimada-machi, Nagano-shi, Nagano 381-2287, Japan
Date of Establishment	September 12, 1946
Capital	24,223 million yen (as of March 31, 2019)
Fiscal Year and Listing Market	Ending March 31 First Section of the Tokyo Stock Exchange
Consolidated Subsidiaries (10 companies)	Domestic: two companies SHINKO PARTS CO., LTD. (Nagano City, Nagano Prefecture) SHINKO TECHNOSSERVE CO., LTD. (Nagano City, Nagano Prefecture) Overseas: eight companies KOREA SHINKO MICROELECTRONICS CO., LTD. (KSM: Korea) SHINKO ELECTRONICS (MALAYSIA) SDN. BHD. (SEM: Malaysia) SHINKO ELECTRIC INDUSTRIES (WUXI) CO., LTD. (SEW: China) SHINKO ELECTRIC AMERICA, INC. (SEA: U.S.A.) SHINKO ELECTRONICS (SINGAPORE) PTE. LTD. (SES: Singapore) KOREA SHINKO TRADING CO., LTD. (KST: Korea) TAIWAN SHINKO ELECTRONICS CO., LTD. (TSE: Thailand) SHANGHAI SHINKO TRADING LTD. (SST: China)
Affiliated Company (One company)	SHINKO MICROELECTRONICS (THAILAND) CO., LTD. (SMT: Thailand)

## Net Sales

<Net Sales>

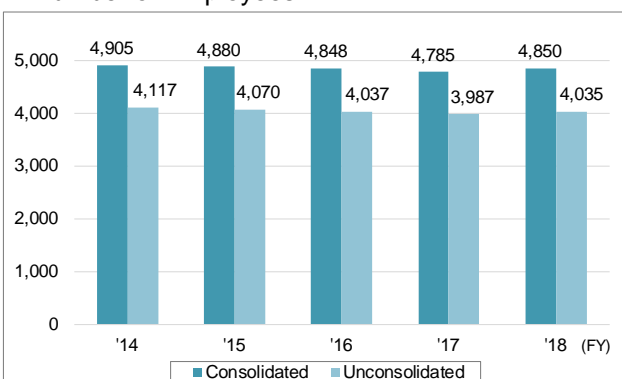


<Net Sales by Region (FY2018)>

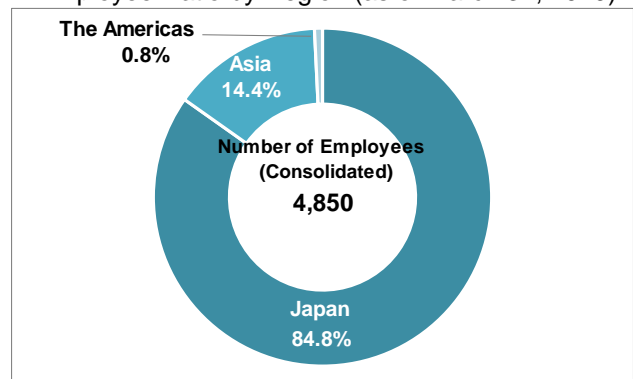


## Number of Employees

<Number of Employees>

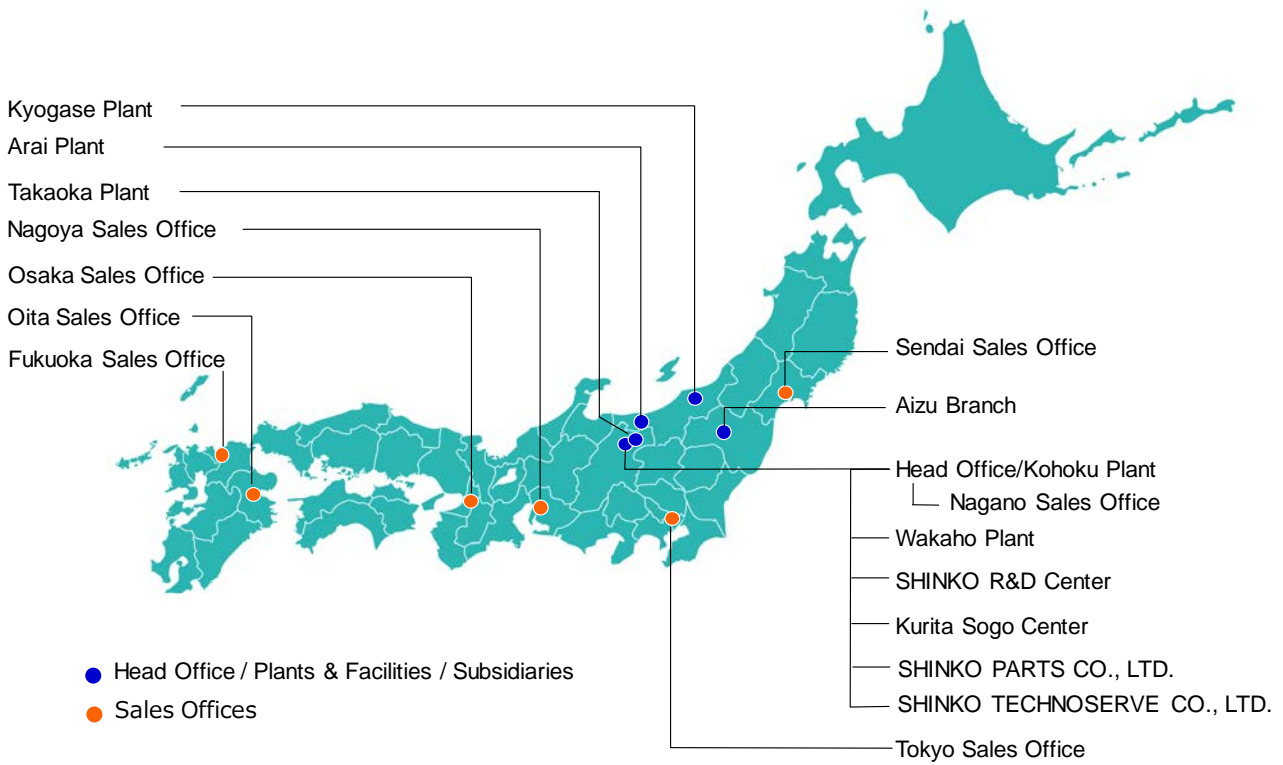


<Employee Ratio by Region (as of March 31, 2019)>

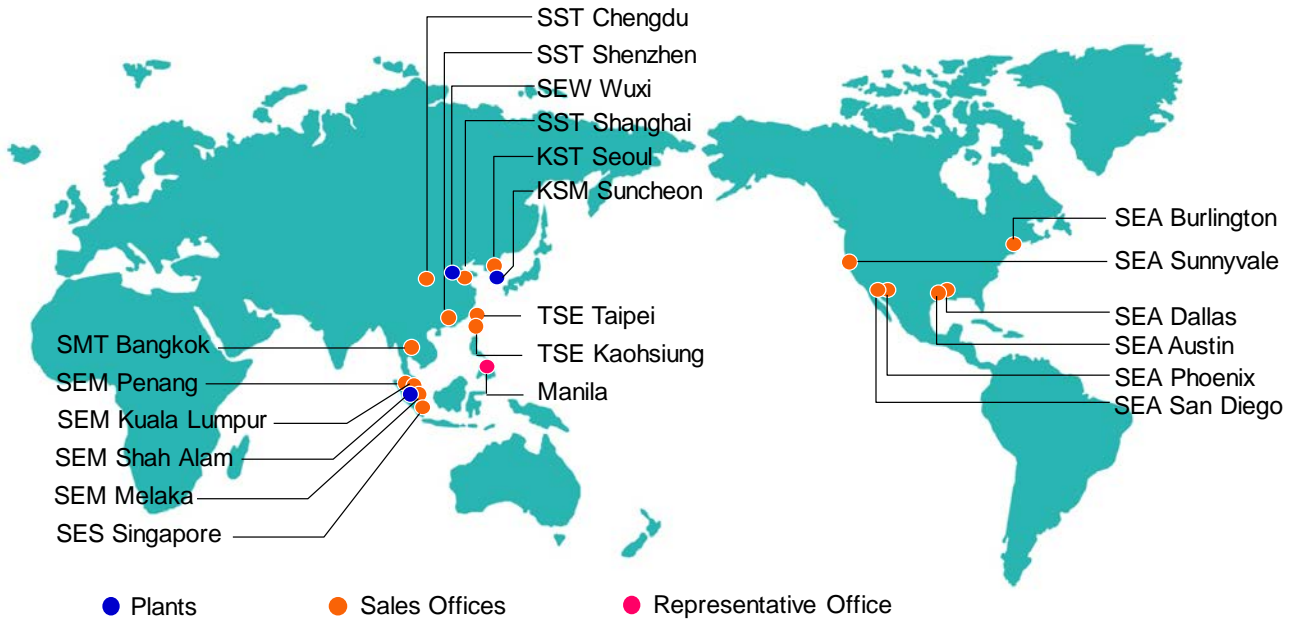


## Business Locations

### <Domestic Network>



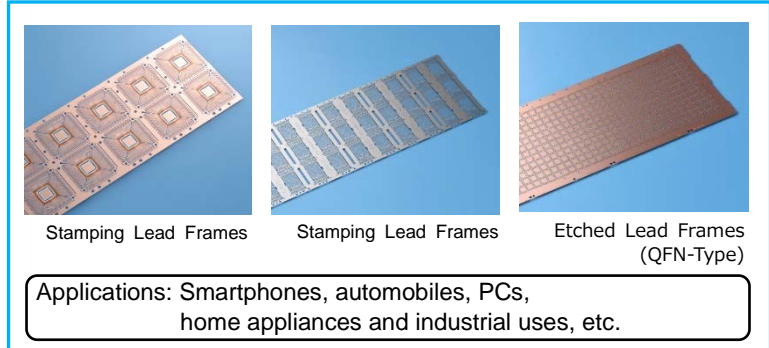
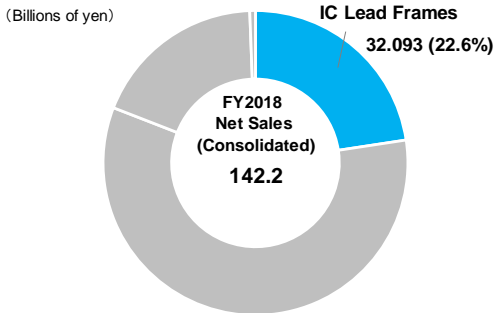
### <Global Network>



## Business Overview by Product Category

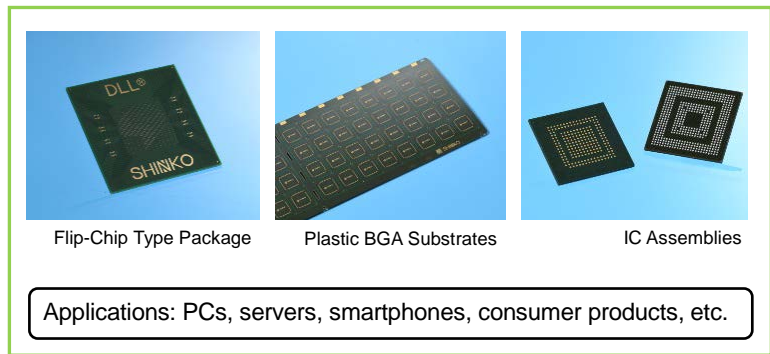
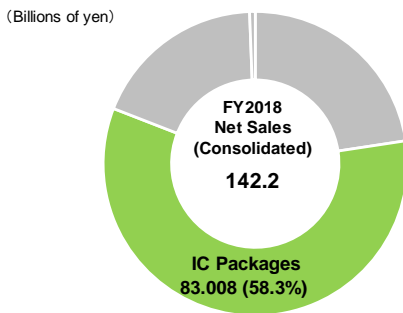
### IC Lead Frames

The IC Lead Frames segment consists of stamping lead frames and etched lead frames. Made of metal, lead frames are exceptionally reliable and extremely versatile.



### IC Packages

The IC Packages segment includes such products as flip-chip type packages, plastic BGA substrates, heat spreaders, and IC assemblies. They are used in PCs, servers, smartphones and, in recent years, the automotive applications among other areas.



### Hermetic Seal Parts

The Hermetic Seal Parts segment consists of ceramic electro static chucks and glass-to-metal seals. Ceramic electro static chucks are used in semiconductor manufacturing equipment, while glass-to-metal seals' uses include automotive sensors and optical devices among others.

