

# Motor Core

## Introduction

SHINKO provides high-precision, high-quality motor cores by applying precision stamping die tool technology cultivated by semiconductor package manufacturing technology.

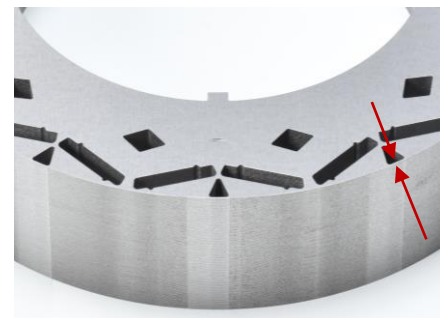
## Feature

- Available electrical steel sheet thickness: 0.15 mm to 0.5 mm
- Precision stamping and laminating for fine and complicated shapes
- Consistent in-house process from stamping die tool design, tool manufacturing and stamping



## Example

- |                              |                 |
|------------------------------|-----------------|
| • Sheet core thickness       | : 0.25 mm       |
| • Sheet core flatness        | : <0.35 mm      |
| • Laminated core diameter    | : $\Phi 170$ mm |
| • Laminated core height      | : 39 mm         |
| • Laminate position accuracy | : <0.02 mm      |
| • Dimensional tolerance      | : <0.02 mm      |



Outer-Wall Width : 0.25 mm

## Application

- Motors for industrial equipment
- Motors for electric vehicles and hybrid vehicles

